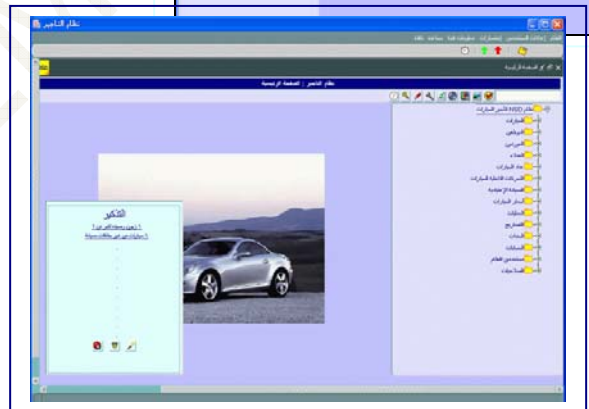
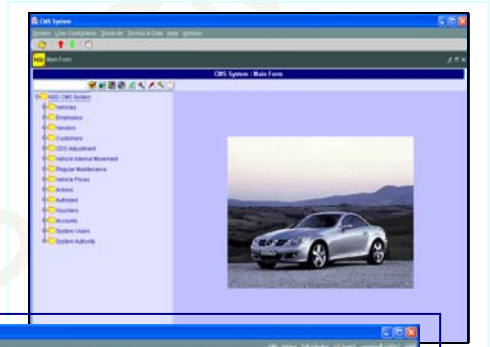




WWW.MYNSD.FR



# NSD CMS

NSD (Car Management System)

NSD SYSTEMS



NSD is Software Editor Company specialized on the Enterprise Resources Planning (ERP) package.

The NSD Car Management System (NSCMS) track and manage in your enterprise, in real-time, the:

Rent

Lease

Sales

Depreciation

Customers Management

Employees Management

Maintenance

Purchasing...

Accounting

Human Resource

It is an integrated application; this application allows you to manage all cars movements in terms of rent, lease, sales, and maintenance. The NSD Car Management System is, also, a comprehensive system that covers a wide range of tasks relating to vehicles management. The system includes the Car Rental module, Vehicle Maintenance module, Customer Management module etc. with a list of comprehensive reports.

To improve your business processes in order to get more success and more profits, the NSD CMS System developed based on the best, worldwide, business practice; it is designed, by latest scientific and Global experiences (Business Process Management), to administrate and organize the total business process in your company.

Some major NSD Car Management System benefits:

1. Client/Server architecture allows the multiple users to access the system from different locations.
2. Centralized Data Base
3. "Best-practices" included in the applications.



4. Multi-Language supports (English/Arabic).
5. Easy customization.
6. User level security.
7. An online Message alert system (MAS) allowing the user to be alert by the management or by any customizing issues, the MAS system provides the user (by customizing warning messages) an alert to indicate him to any possible mistake, for example: the expiry date for the materials, or the renew of the car papers .....

Also, the Message alert system (MAS) allows you to avoid any possible forfeiture or losses for the company.

#### NSD CMS SYSTEM has also the below important points:

- 1 Solutions designed with enterprises and users in mind
- 2 Competent for your business
- 3 Continuous technology evolution
- 4 Steady value innovation
- 5 The user is at the center
- 6 Instantly usable applications
- 7 On-line/real time information throughout all the functional areas of an organization
- 8 Data standardization and accuracy across the enterprise
- 9 Best Business practices and best Business Process Management are included in the applications
- 10 The efficiency they force an organization to undertake
- 11 The analysis and reporting that can be used for long term planning

NSD CMS System is a client server system (one Server and unlimited Clients); it uses a central and main data base (ORACLE).

NSD CMS System has high multi levels of security to limit the access of the users to the sensitive data.

In additional to the above functionalities, a lot of reports and tools for each department and application. These reports have two categories:

#### 1- Query reports allowing the user to manage his own reports by the management of the



input parameters.

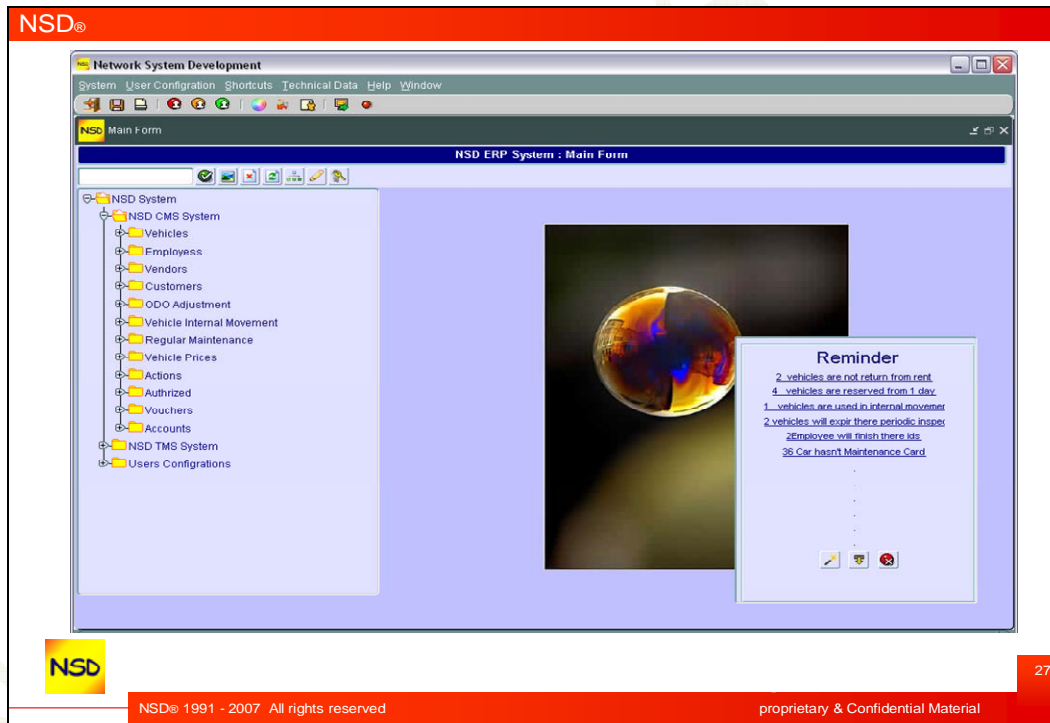
2- A standards report having large possibilities in terms of input data.

NSD CMS System is interfaced with Microsoft functionalities, which allow you to send or manage your reports by WORD or Excel or PDF and send it by Outlook

Any other interfacing between NSD CMS SYSTEM and a third system can be developed directly by NSD teams

This system, as well the other applications includes in the NSD ERP SYSTEM, can be procured and implemented separately. In this case the technical plate form is similar to the whole NSD ERP SYSTEM.

### NSD Car Management System Functionality:



- 1- Ability to define your company and create multi-branches.
- 2- Centralized database to connect all branches to same database for helping of the administration process.
- 3- Ability to create a Hierarchy structure for the vehicles.
- 4- Classify the vehicles according the technical specification.

- 5- Ability to transfer the vehicles between the branches.
- 6- Ability to arrange all contracts of the vehicles (Rent, Release, Sale, and maintain).
- 7- Ability to organize the employee and drivers.
- 8- Ability to control the time sheet for the working time for the drivers and vehicles.
- 9- Ability to create the check-in and check-out contract for one vehicle by two branches (check-in done by one branch and check-out done by another one maybe in another city).
- 10- Ability to reserve a vehicle for one customer for certain time.
- 11- Ability to adjust the ODO value for one vehicle manually in case of occurring mistakes.
- 12- Ability to create non-revenue contract for maintenance or for any purpose.
- 13- Ability to create a list of customer in three lists:
  - Special Customer List
  - Normal Customer List
  - Black customer List
- 14- Ability to create multi-price list for the each vehicles and assign it to the customer list.

The screenshot shows the 'Display Vehicle Prices' window in the NSD Network System Development application. The window title is 'NSD Display Vehicle Prices'. It features a menu bar with 'System', 'User Configuration', 'Shortcuts', 'Technical Data', 'Help', and 'Window'. Below the menu bar is a toolbar with various icons. The main content area is divided into several sections:

- Vehicle Information:** Contains input fields for 'Price Procedure' (set to 1) and 'General Way', and 'Season' (set to 1) and 'Year'.
- Table:** A table with columns: Group, Vehicle, Vehicle Group, Vehicle Gear, and Vehicle Model. The data rows are:
 

Group	Vehicle	Vehicle Group	Vehicle Gear	Vehicle Model
100	No Text Defind	XS	Mixed Gear	2007
222	Echo	EC	Manual Gear	2004
77	No Text Defind	No Text Defind	Mixed Gear	2004
06	No Text Defind	AVALON	Mixed Gear	2005
22	Ltz	Ltz	Mixed Gear	2007
23	Super Ban	SU	Mixed Gear	2007
- Price Settings:** Four columns of input fields for 'Daily', 'Monthly', 'Yearly', and 'Others' categories. Each category has fields for 'Daily Rent', 'Minimum Price', 'Daily Distance', 'Extra Km', and 'Extra Hour Cost'.
 

Category	Daily Rent	Minimum Price	Daily Distance	Extra Km	Extra Hour Cost
Daily	100	100	100	01.000	01.000
Monthly	50	50	100	01.000	01.000
Yearly	10	10	10	01.000	01.000
Others	Extra Driver Cost: 10	Accident Penalty: 10	Cms Driver Price: 10	Car Insurance: 10	Insurance Serves: 1
- Footer:** A note stating 'All Prices Are Refere To SAR: Saudi Ryial'.

The NSD logo is visible in the bottom left corner of the window. The page number '28' is in the bottom right corner of the screenshot area. Below the screenshot, the text 'NSD® 1991 - 2007 All rights reserved' and 'proprietary & Confidential Material' is displayed.

## NSD Car Management System provides you also:

- 1- Ability to create a list of vendors (workshop Centers) for doing regular maintenance for vehicles.
- 2- Ability to archive the regular maintenance processes for each vehicles and reported.

The screenshot shows a software window titled 'NSD®' with a menu bar (System, User Configuration, Shortcuts, Technical Data, Help, Window) and a toolbar. The main content area is titled 'Display Regular Maintenance Invoice' and is divided into two sections: 'Invoice Head' and 'Invoice Details'.

**Invoice Head:**

- Invoice No: 3
- Credit / Cash: Cash
- Invoice Date: 14/12/2006
- Company No: 1 Star
- Branch Code: 1 Star\_Branch1
- Vehicle Id: ١٩٨ ح طيب EC Toyota-Echo-EC
- Vendor No: 4
- Driver: 13 سبيع احمد سالم
- Created By: TAMIM
- Changed By:
- Begin Date: 14/12/2006
- End Date: 01/01/9999

**Invoice Details:**

Line	Maint	New ODO	Price	Currency	Notes
1	Engin Oil	50	50	SAR	

The bottom of the window shows a status bar with the NSD logo, the text 'NSD® 1991 - 2007 All rights reserved', and 'proprietary & Confidential Material'. A page number '30' is visible in the bottom right corner.

- 3- Ability to archive the Traffic accidents for every rented person and increase the percentage of paid amount as customizing.
- 4- Automatically transfer the rented person to black list after customized number of the traffic accidents.
- 5- Ability to create Accounts for the Vehicles to post the maintenance invoices and yearly percentage of the depreciation.

- 6- Ability to create accounts for the customer and vendors.

NSD

NSD ERP System : Customers Accounts

Detail Query

Transaction 00001 Regular Maintenance Invoice Transaction date To

Credit 1000 To 5000 Debit 10000 To 50000

Reference 1 To 50 Post date 01/02/2006 To 30/12/2006 Posted ALL

النس محمد الغاوي

Customer Account Detail

Transaction	Transaction Name	Code	Debit	Credit	Currency	Rate	L.Debit	L.Credit	L.Currency	Transaction Date	Post Date
00007	Rent Contract	3	200	0	SAR	1	200	0	SAR	06/12/2006	16/12/2006
00007	Rent Contract	38	1500	0	SAR	1	1500	0	SAR	21/01/2007	
00008	Payment Voucher	2	150	0	SAR	1	150	0	SAR	06/12/2006	16/12/2006
00009	Receipt Voucher	34	0	1	SAR	1	0	1	SAR	11/12/2006	16/12/2006
00009	Receipt Voucher	62	0	4850	SAR	1	0	4850	SAR	11/01/2007	

5 / 1

1850 4851 3001

NSD

29

NSD® 1991 - 2007 All rights reserved

proprietary & Confidential Material

- 7- Ability to create system users in multi-level of the permission.
- 8- Ability to determine the hour of beginning and ending working day.
- 9- Prevent the system users of log in to the system out of the working day rang.
- 10- Ability to create Level of privileged User to use the system every one according to his permission.

In addition to the message alert center which gives you a warning message to be alerted for some processes (renew the license for one vehicle, expiry of the Insurance for one driver.....)

A lot of kinds of reports helps you to have cleared an idea about the work in your company for Example: the check-in and check-out contract, the maintenance processes for one vehicle or for all doing by one vendor.....

These reports help you to improve the level of the work in your company

## My office

The NSD CMS System is a performance exchanger system allowing the users to avoid to be disconnected in order to send and receive emails; the NSDCMS gives you the Ability to send and receive emails and messages directly through the screen where you are working in the NSD CMS

## Related Activities

Related to the ND CMS package NSD Teams assure you a complete cycle of services as:

- 1 NSD CMS SYSTEM Implementation
- 2 Training & documentation
- 3 Maintenance & Upgrade

### Implementation

- 1 Offering proven methodologies, advanced software tools, and best practices to get your NSD solution up and running quickly to contribute into your business goals.
- 2 Work with the client to develop an implementation strategy focused on his key priorities.
- 3 Create an implementation plan that enables you to manage project scope and evaluate progress along the way.
- 4 NSD based implementation methodology

### Training & Documentation

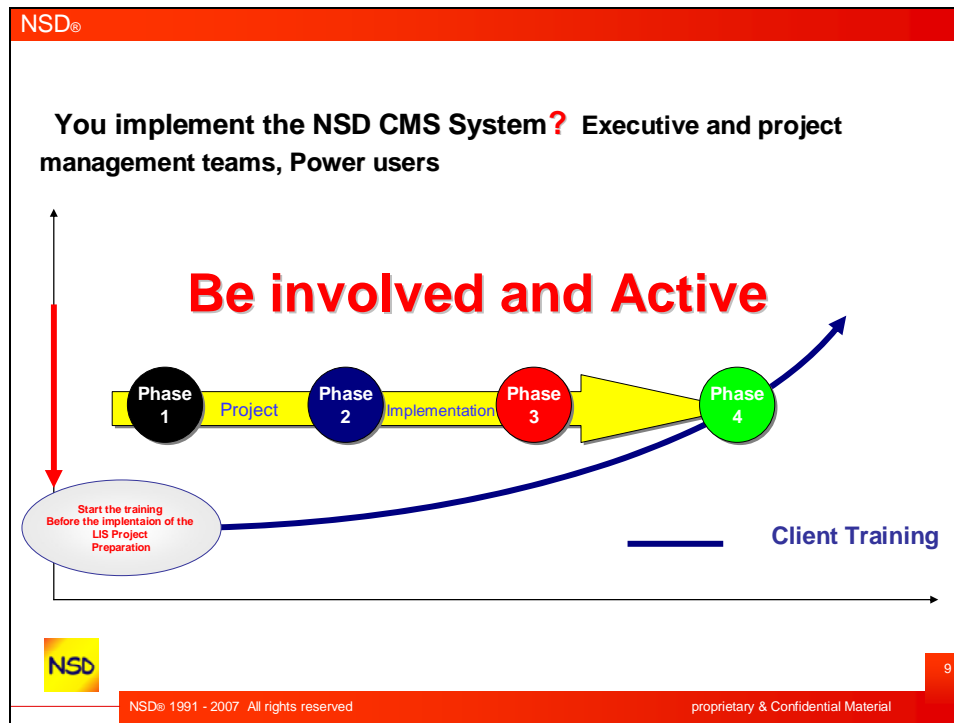
Two types of training are assured by NSD

- 1- Power Users Training
- 2- End Users Training

The above training are started form your acquisition of the NSD CMS until its complete implementation (GO LIVE),

Concerning the documentation, NSD assures you a detailed end users (System Navigation) manual and a power users customizing manual.





### Maintenance & Upgrade

Our Services Maintenance gives the client various options, each designed to keep his NSD CMS SYSTEM solution up and running. These include: NSD Standard Support Includes system performance monitoring, proactive services, and access to NSD experts